

CoroMill® 170

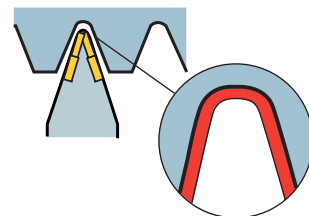
Rough gear milling with precision



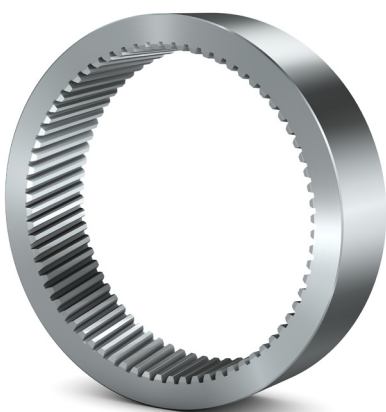
New cutter for gear milling

CoroMill 170 is a high performance cutter for large gears in module range 12-22. In combination with our latest grades, CoroMill 170 will cut time in your gear machining, leaving minimal and even allowance for subsequent operations. Use it for precision and reliability in roughing external and internal gears.

Generates gear wheel profiles in accordance with DIN 867 and allowance in accordance with DIN 3972-4



CoroMill 170 leaves minimal and even finishing allowance



Applications

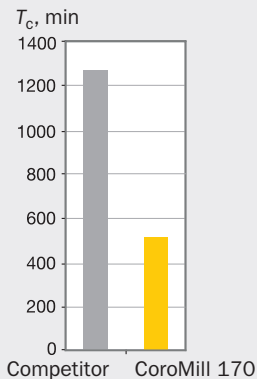
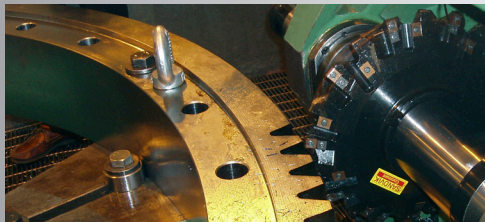
- Module range 12 – 22
- Roughing of internal and external gears
- Slewing rings
- Planetary gears

CoroMill® 170:

- Productivity of high performance grades
- Roughing profile close to final gear wheel profile
- Clean root cut, no deviations

\$53,170 yearly savings with CoroMill® 170

Component	Slewing ring Ø 3 m (9.84 ft) module 16
Workpiece material	34CrMo4, ISO P
CMC / MC code	02.2 / P2.2.Z.AN
Hardness Brinell (HB)	300
Tool	CoroMill 170 / HSS hob
Insert grade	GC1030 / HSS



Cutting data:	HSS hob	CoroMill® 170
D_c mm (inch)	230 (9.055)	300 (11.811)
z_c	N/A	10
z_n	N/A	40
a_e mm (inch)	34 (1.339)	34 (1.339)
v_c m/min (ft/min)	25 (82)	126 (413)
v_f mm/min (inch/min)	32 (1.260)	230* (9.055*)
f_z mm/rev (inch/rev)	0.12 (0.0047)	0.20 (0.0079)
T_c , min (per component)	1260	510
Tool life, pcs	1.5	1
Productivity increase	-	45%
Savings per year, USD	-	43 000 (52 700 \$)

*) Machine tool maximum

With CoroMill 170, the productivity increased by 45% and the yearly savings reached \$53,170.



Available products

The standard assortment covers:

- Inserts
- Grades GC1030 and GC4240
 - Two insert geometries
 - 6 root inserts
 - 1 flank insert
 - 1 shim

Cutters

- Assortment for module range 12 - 22

Engineered products are available for more:

- Diameters
- Insert sizes and grades
- Gear profiles
- Modules



Your success in focus